

The Economic Impact of Louisiana's Community Health Centers

Louisiana Primary Care Association

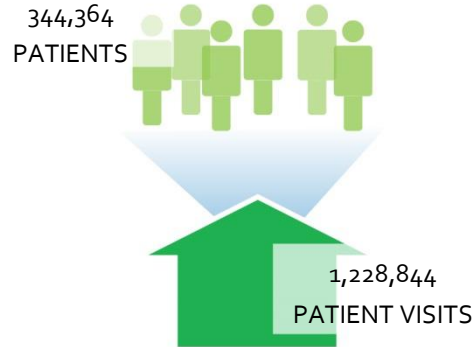
Economic Impact

COMMUNITY IMPACT

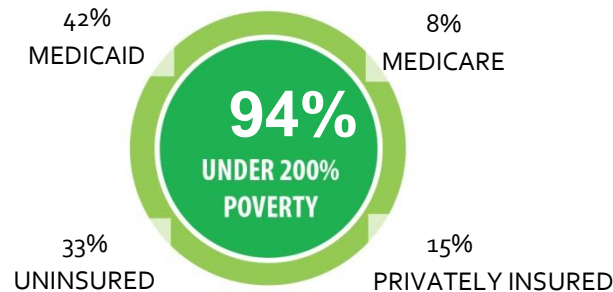
For more than 50 years, U.S. health centers have delivered comprehensive, high-quality preventive and primary health care to patients regardless of their ability to pay, becoming one of the largest safety net systems in the country.

Louisiana health centers have been no exception. In 2015, 34 Louisiana health centers provided care to many of the most underserved members of their communities through 225 sites. In addition to providing quality care, Louisiana health centers generated positive economic impacts, including jobs, tax revenues and savings to the health care system.

Patients Served



Patient Profile



Cost Savings

\$434.9 Million

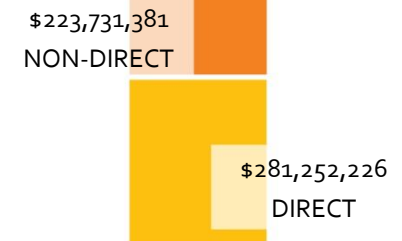
ANNUALLY

ECONOMIC IMPACT

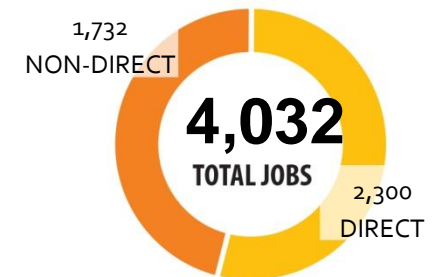
Total Economic Impact

\$504,983,607

ANNUALLY



Employment



Total Tax Revenue

\$57.7 Million

ANNUALLY



COMMUNITY IMPACT

Community health centers provide high quality, cost-effective, patient-centered care to vulnerable populations. Health centers serve 1 in 7 Medicaid beneficiaries, almost 1 in 3 individuals in poverty, and 1 in 5 low-income, uninsured persons. Nationally, two-thirds of health center patients are members of racial or ethnic minorities, which places health centers at the center of the national effort to reduce racial disparities in health care.¹

Recent studies show that, on average, each patient receiving care at a health center saved the health care system 24%, annually.⁴ With 344,364 patients served by community health centers in Louisiana in 2015, the estimated annual savings is \$434.9 million at \$1,263 saved per patient.⁵

ECONOMIC IMPACT

As health centers expand, their expenditures and corresponding economic impact also grow. In 2015 alone, Louisiana health centers contributed about \$505 million dollars. The table to the right summarizes economic impact and employment.

The tax impacts of Louisiana health centers are divided into state/local governments and Federal government agencies.

Tax revenue is generated through employee compensation, proprietor income, indirect business taxes, households, and corporations based on the modeled impact.

Distribution of Population

	LAPCA Population	National Population ^{2, 3}
Under 100% Poverty	78%	71%
Under 200% Poverty	94%	92%
Uninsured	33%	24%
Medicaid	42%	49%
Medicare	8%	9%
Privately Insured	15%	17%

Summary of 2015 Total Economic Activity

Stimulated by 34 of Louisiana's Community Health Centers' Current Operations

	Economic Impact	Employment (# of FTEs*)
Direct	\$ 281,252,226	2,300
Indirect	\$ 79,038,534	603
Induced	\$ 144,692,847	1129
Total	\$ 504,983,607	4,032

Direct # of FTEs (employment) based on HRSA 2015 UDS state level data for FQHCs.

Summary of Louisiana CHCs' 2015 Tax Revenue

	Federal	State/Local
Direct	\$31,091,949	\$3,345,308
Indirect	\$6,407,775	\$1,622,540
Induced	\$11,137,891	\$11,137,891
Total	\$48,637,615	\$9,049,545
Total Tax Impact	\$57,687,160	

*Full-time Equivalent (FTE) of 1.0 means that the person is equivalent to a full-time worker. In an organization that has a 40 hour work week, a person who works 20 hours per week (i.e. 50 percent time) is reported as "0.5 FTE." FTE is also based on the number of months the employee works. An employee who works full time for four months out of the year would be reported as "0.33 FTE" (4 months/12 months).

HOW ECONOMIC IMPACT IS MEASURED

Using IMPLAN, integrated economic modeling software, this analysis applies the “multiplier effect” to capture the direct, indirect, and induced economic effects of health center business operations and capital project plans. IMPLAN generates multipliers by geographic region and by industry combined with a county/state database. It is widely used by economists, state and city planners, universities and others to estimate the impact of projects and expenditures on the local economy. This analysis was conducted using **IMPLAN Version 3, Trade Flows Model**.

WHAT ARE DIRECT, INDIRECT AND INDUCED IMPACTS?

Direct impacts result from **health center expenditures associated with expanded operations, new facilities, and hiring.**

A health center purchases medical devices from a local medical supply store.



This purchase is a **direct** economic impact of the health centers expanded operations.

Indirect impacts result from **purchases of local goods and services, and jobs in other industries.**

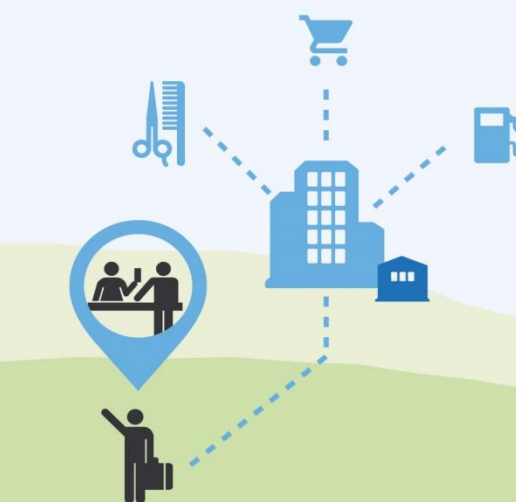
The medical supply store purchases paper from an office supply store to print receipts and hires a local delivery service to transport the medical devices.



These purchases are **indirect** economic impacts of the health centers expanded operations.

Induced impacts result from **purchases of local goods and services at a household level made by employees of the health center and suppliers.**

As local industries grow and household income increases, employees of the health center, medical supply store, office supply store, and delivery service spend their salaries in the community.



These purchases are **induced** economic impacts because they are the result of growth of the entire community.

34 LOUISIANA COMMUNITY HEALTH CENTERS INCLUDED IN ANALYSIS

Access Health Louisiana
Baton Rouge Primary Care Collaborative, inc.
CareSouth
CASSE Community Health Institute
Common Ground Health Clinic
CPHD 2 Medical Center
CrescentCare
David Raines Community Health Center
Delhi Community Health Center
EXCELth, Inc.
Health Care for the Homeless
Iberia Comprehensive Community Health Center, Inc.
Innis Community Health Center
JeffCare
Jefferson Community Health Care Centers
Marillac Community Health Centers
Morehouse Community Medical Centers
NOELA Community Health Center
Odyssey House Louisiana
Open Health Care Clinic
Outpatient Medical Center
Primary Care Providers for a Healthy Feliciana
Primary Health Services Center
Priority Health Care
Rapides Primary Health Care Center, Inc
Saint Thomas Community Health Center
Southeast Community Health Systems
Southwest Louisiana Primary Healthcare Center
St. Gabriel Health Clinic, Inc.
Start Corporation
SWLA Center for Health Services
Teche Action Board, Inc.
Tensas Community Health Center
Winn Community Health Center

REFERENCES

1. NACHC, *A Sketch of Community Health Centers*, 2013. Includes patients of federally-funded health centers, non-federally funded health centers, and expected patient growth for 2013.
2. Based on Bureau of Primary Health Care, HRSA, DHHS, 2014 Uniform Data System. U.S.: Kaiser Family Foundation, State Health Facts Online, www.statehealthfacts.org. Based on Census Bureau's March 2012 and 2013 Current Population Survey (CPS: Annual Social and Economic Supplements).
3. Based on Centers for Medicare & Medicaid Services: www.cms.gov. Medicare Enrollment – All Beneficiaries: as of July 2012.
4. Richard et al. *Cost Savings Associated with the Use of Community Health Centers*. Journal of Ambulatory Care Management, Vol. 35, No. 1, pp. 50–59, January/March 2012.
5. NACHC. *Community Health Centers: The Local Prescription for Better Quality and Lower Costs*. <http://www.nachc.org/client/LocalPrescriptionBrief.pdf>
Includes cost savings per patient. March 2011.

SOURCES

This report was created with FY15 financial data and 2015 UDS Files in cooperation with Louisiana Primary Care Association.

ABOUT CAPITAL LINK

Capital Link is a non-profit organization that has worked with hundreds of health centers and Primary Care Associations for over 18 years to plan capital projects, finance growth and identify ways to improve performance. We provide innovative consulting services and extensive technical assistance with the goal of supporting and expanding community-based health care. For more information, visit us online at www.caplink.org.